



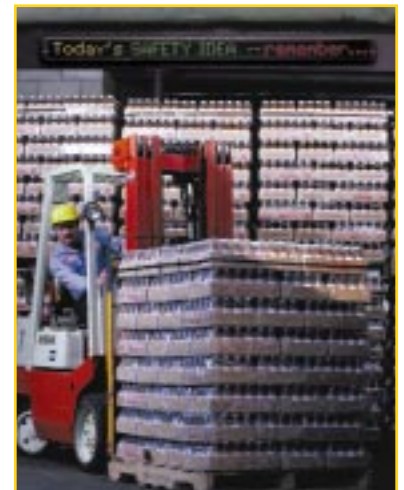
ALPHA™ 300 SERIES

Adaptive's ALPHA™ 300 Series is one of our most versatile single-line indoor electronic message displays.

The ALPHA™ 300 Series, provides constant employee communication. Post real-time information, boost morale, or advertise company-wide events, birthdays and anniversaries—all from your desktop PC or easy to use handheld keyboard.

These versatile displays keep you connected with employees throughout the day and company wide. Easy to program and visually superior.

ADAPTIVE™ - Creating a new vision for business communication



Standard Features

- 3.1 inch Character size
- 2 Length options available
- One year USA Factory Warranty
- Stores & displays over 80 messages
- 5 operating speeds
- Keyboard programmable from 30 ft.
- 8 Brilliant colors & 3 rainbow effects
- 6 character fonts

ALPHA™ 300 Specifications

Sizes	320C	330C
Case Dimensions: (With power supply)	57.4"L x 3.8"D x 5.5"H (145.8 cmL x 9.7 cmD x 14.0 cmH)	84.4"L x 3.8"D x 5.5"H (214.3 cmL x 9.7 cmD x 14.0 cmH)
Approximate Weight:	12.5 lbs. (5.7 kg.)	17 lbs. (7.7 kg.)
Display Dimensions:	54"L x 3.1"H (137.2 cmL x 7.9 cmH)	81"L x 3.1"H (205.7 cmL x 7.9 cmH)
Display Array	120 x 7 pixels	180 x 7 pixels
Characters Displayed	20 minimum/typical 34 condensed rotate mode	30 minimum/typical 51 condensed rotate mode
Display Memory	29,500	28,500

Pixel Size (Diameter):	.276" (.7 cm)
Pixel (LED) Color:	Eight colors and three rainbow effects (tricolor in the condensed rotate mode)
Center-to-Center Pixel Spacing (Pitch):	.45" (1.1 cm)
Character Size	3.1" (7.6 cm)
Character Set:	International Character Set, Block (sans serif), decorative (serif), upper/lower case, slim, wide
Memory Retention:	One month typical
Message Capacity:	81 different messages can be stored and displayed
Message Operating Modes:	<ul style="list-style-type: none"> – 25 consisting of: Automode™, Hold, Roll (6 directions), Rotate, Sparkle-On, Twinkle, Interlock, Wipe (six directions), Spray-On, Slide Across, Starburst, Switch, Flash, Snow, Scroll and condensed rotate – Continuous message entry with automatic centering in any mode – User programmable logos and graphics – Five variable speed controls
Built-In Animations:	Cherry Bomb Exploding, Don't Drink and Drive, Fireworks, Slot Machine, No Smoking, Running Animal, Moving Auto, Welcome (in script), Thank You (in script)
Real-Time Clock:	Date and time, 12 or 24 hour format, maintains accurate time without power for up to 30 days typical

Serial Computer Interface:	RS232 and RS485 (multi-drop networking for up to 255 displays) <i>Options</i> –Wireless Interface –Ethernet LAN interface
Power:	100 VAC to 240 VAC and 50/60 Hz for all models: 40 watts (320C) and 50 watts (330C)
Power Cord Length:	US: 10' maximum Europe, Australia, UK: 3.3m maximum
Keyboard:	Handheld, Eurostyle, IR remote
Case Material:	Extruded aluminum
Limited Warranty:	One-year parts and labor, factory servicing
Agency Approvals:	<ul style="list-style-type: none"> – Listed to ANSI/UL 1950-Second Edition (US) and CAN/CSA-22.2 No.950-M89 (Canada) – Complies with EN 60950: 1992 (Europe) and AS/NZS 3260-1993 (Australia/New Zealand) – FCC Part 15 Class A – CE Marked
Operating Temperature:	32° to 120°F, 0° to 49°C
Humidity Range:	0% to 95% non-condensing
Mounting:	Hardware to accommodate ceiling or wall mounting

ADAPTIVE™
Adaptive Micro Systems Inc

7840 N. 86th Street Milwaukee WI 53224
1-800-558-7022 / Fax: 414-357-2029 / www.ams-i.com